

# Benjamin's Mystery Deck



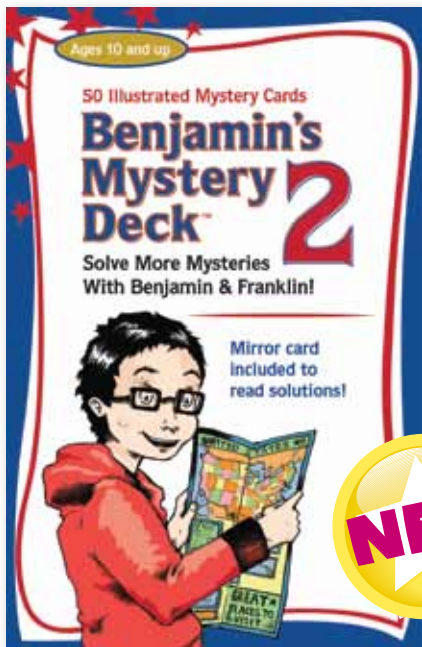
**Case Pack: 6**  
**Sku: 52126W**

Join 13-year-old Benjamin and his bulldog sidekick, Franklin, to help solve 46 mini mysteries! Set in Philadelphia, these tales are filled with fun historical and regional facts. Each mystery card includes an illustrated clue to help solve the crime and covertly boost visual perception skills. If you get stuck, solutions are printed in reverse type at the end of each mystery and a mirror card is included.

## Solve Mysteries With Benjamin & Franklin!

### Contains:

- 46 Mystery Cards
- 2 Biography Cards
- 2 Vocabulary Cards
- 1 Mirror Card



**GREAT**  
**Reviews!**

"They're convenient and short enough to do in the car, running errands, etc., and are a lot of fun."

"Great puzzles for my 7 and 9 year old grand kids. REALLY sharpens their minds as well as their reading and listening-in-detail skills! They love the cards!!!"